

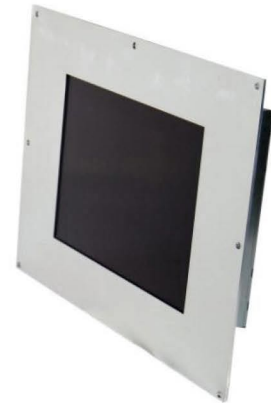
**12,1" TFT replacement monitors  
for**

- ✓ **12" CRT colour monitor**
- ✓ **CNC 3000/3360/3460**
- Philips 432/10 DECKEL  
MAHO**

Item-No.: **LCD12-0199**

Our TFT industrial monitors are designed specifically for the replacement of CRT monitors manufactured in many different controls.

Conversion works quick and easy with plug & play.



**Technical specifications**

Display	12,1" TFT Full Colour active, 1024 x 768 pixels
Active area TFT screen	249 x 188 mm (w x h)
Frequency	15 - 45 kHz horizontal, 50 - 75 Hz vertical
Connector	15 pin two rows D-SUB female
Housing dimension	400 x 308 x 65 mm (w x h x d)
Settings	via OSD (On Screen Display)
Power supply	AC 85 - 240 V
Temperature range	-10° to 55°C operating temperature
Manufactured according to	CE industry standard, EN55022, EN55024

Note: Subject to change without notice, errors excepted 07.2013

